

660SJC Telescopic Crawler Boom Lift



APPLICATIONS

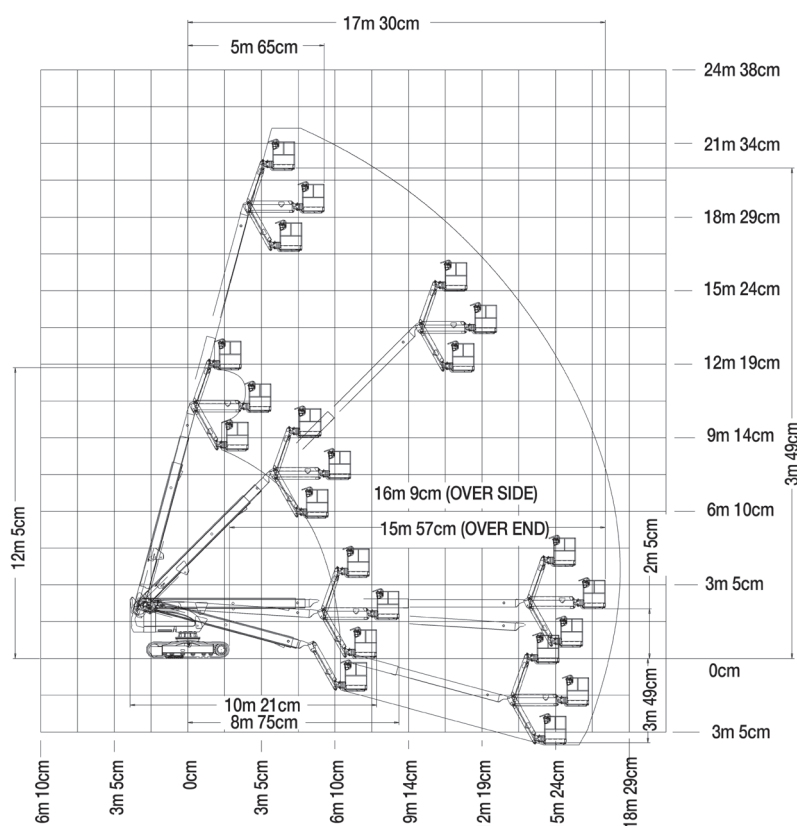
- Bridge maintenance and reconstruction
- Dam and reservoir construction
- Tunnelling construction
- All maintenance and construction work
- Ideal tilt up panel installation
- Steel building installation
- Steel cladding contractors

QUESTIONS TO ASK

- What are the ground conditions in the work area?
- What are the site conditions travelling around the site?
- What is the working height needed for the job?
- What is the outreach required for the job?
- Do you need an extension lead outlet in the platform?
- Will an inbuilt Miller 5.5kVA generator make the job easier?
- Will you need rubber pad tracks for a concrete surface?

KEY SELLING POINTS

- Smooth control, proportional hydraulic crawler drive, with two speed ranges
- Proportional lift and swing controls at the platform for fast functionality
- Jib boom and basket rotate
- Cylinder boots protect cylinder rods from overspray and contaminants
- Multi axis 4 degree level sensor
- Plug in JLG analyser at platform and base to indicate system functions for servicing and adjustment
- Deutz Engine D2011 L04. High speed, 4 cylinder, liquid (oil cooled), 48.5kW engine pre-glow and post-glow feature reduces emissions



SPECIFICATIONS

Performance:

Platform Height (max.)	20.32m
Working Height	22.32m
Platform Rotation Angle	180°
Jib Raise Angle	70°
Jib Lower Angle	60°
Jib Articulation Range	130°
Maximum Horizontal Outreach	17.30m
Lift Time	46-60 sec
Lower Time	33-43 sec
Platform Capacity	230kg
Slewing Angle	360°
Continuous Slew	Yes

Dimensions:

Stowed Length	10.21m
Stowed Height	2.57m
Overall Width	2.49m
Ground Clearance	0.38m
Platform Width	2.44m
Platform Length	0.91m
Overall Jib Length	1.83m
Tailswing	1.12m

Power:

Power Source	Diesel
Engine Make	Deutz
Engine Model	D2011 L04
Engine Power	48kW
DC Voltage	12V
DC Power	1000CCA
Genset	5.5kVA Miller
Auxiliary Power	12V Pump

Travel:

Inside Turn Radius	0m
Drive Speed Elevated	0.3km/h
Gradeability with 2WD Crawler	55%
Maximum Ground Bearing Pressure	0.457kg/cm ²

Weights and Capabilities:

Fuel Tank Capacity	151.0 Ltr
Hydraulic Tank Capacity	121.0 Ltr
Operating Weight	12,300kg